



ProcessoSigma



STEEL PAVILIONS FOR AGRICULTURE AND INDUSTRY

Cold-formed Steel Pavilions

X6, X8, X10, X12, X16



DESCRIPTION

PAVILIONS FOR INDUSTRY AND AGRICULTURE COLD-FORMED STEEL SYSTEMS FOR SUPPORT AND STORAGE

Solution developed and industrialized to be easily assembled, according to basic plans and procedures, with no need for specialized manpower or equipment.

Possibility of a complete turnkey solution, or do it yourself. Light metal structure pre-assembled in factory tested and fine-tuned.

Pillars equal to beams, light and robust cold-formed parts.

Bolted connection nodes for better tuning and adjustment.

Only 1 type of bolt and 3 sizes of tools.

Facade and roof plates, cut to size.

All models X6, X8, X10, X12, X16 and X16 PLUS are designed and dimensioned according to the Eurocode.

5-year anti-corrosion guarantee for all structures located less than 5.0 km from the seafront and at altitudes above 800 m.

10-year anti-corrosion guarantee for all structures located more than 5.0 km from the seafront and at altitudes below 800 m.

The X6 and X8 models are designed for altitudes up to 800 m and winds up to 120 km/h.

The X10 and X12 models are designed for altitudes up to 1200m and winds up to 120km/h. X16 and X16 PLUS are designed for altitudes up to 800m and winds up to 120km/h.

Cold-formed Steel Pavilions

X6, X8, X10, X12, X16

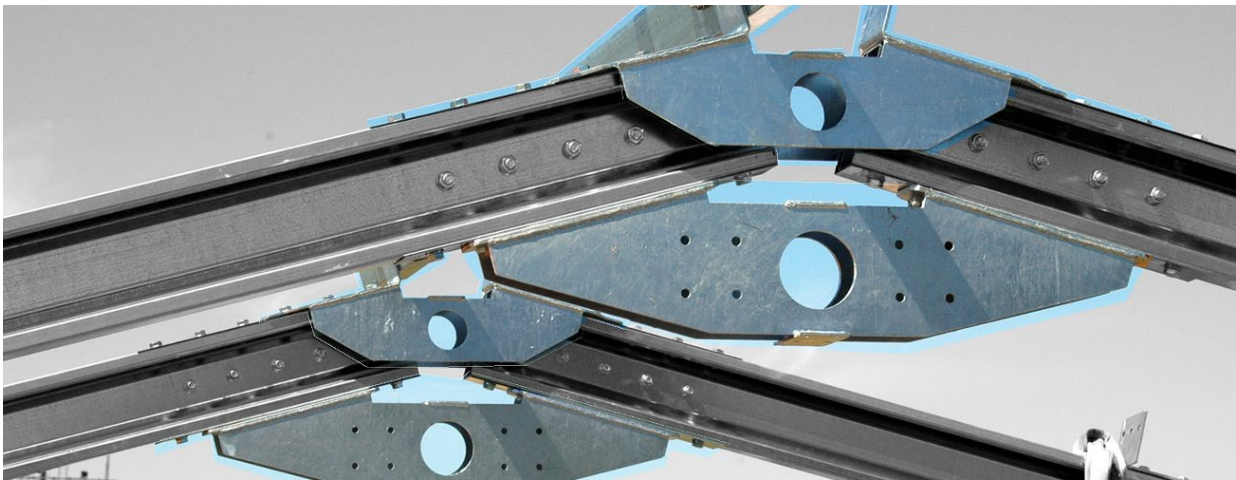
GUARANTEES

Primary structure: galvanized cold roll steel S320GD + Z275

Connecting elements: S275 J1 steel, galvanized by dip galvanizing 600 gr

Validity of the guarantees:

Specificities of the place of implantation such as the proximity to the sea, exposure to winds, altimetric quota, aggressiveness of the environment, type of occupation, among others, condition the choice of materials to apply, and consequently of the offered guarantees.



Total guarantee Anti-corrosion 5 years

Less than 5.0 km from the seafront
Altitude above 800 m

5-year anti-corrosion guarantee for all structures located less than 5.0 km from the seafront and at altitudes above 800 m. Valid warranty for the supplies and services below:

- 1) Wireframe, assembling included;
- 2) Wireframe, customer assembly;
- 3) Sheet metal cladding, assembling included;
- 4) Sheet metal cladding, customer assembly;

Total guarantee Anti-corrosion 10 years

More than 10.0 km from the seafront
Altitude below 800 m

10-year anti-corrosion guarantee for all structures located more than 10.0 km from the seafront and at altitudes below 800 m. Valid warranty for the supplies and services below:

- 1) Wireframe, assembling included;
- 2) Wireframe, customer assembly;
- 3) Sheet metal cladding, assembling included;
- 4) Sheet metal cladding, customer assembly;

Cold-formed Steel Pavilions

X6, X8, X10, X12, X16

MODELS & PRICES

Closed pavilions,

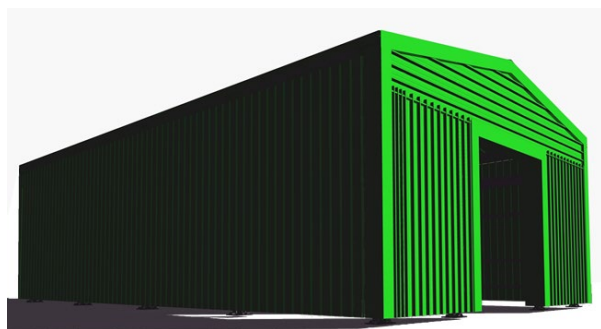
with one or two sides open,

or just with the roof, are possible options.

Price for each solution.

If you want an industrial pavilion, a store closed on the sides, or simply a cover, we have the solution, customized to your needs.

The system can be composed of kits for self-assembly or delivered turnkey solution.



Prices for **Turnkey Solution**

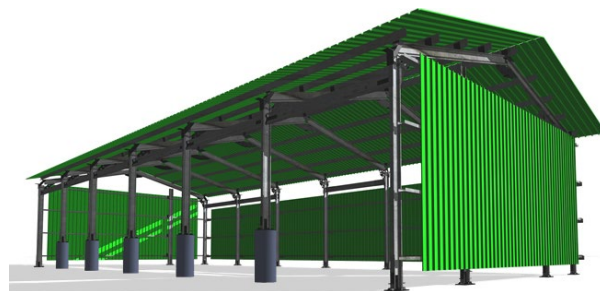
Complete solution that includes structure with integral coating in sheet metal, sliding gate, service door and finishes.

Price with and without gates
Price with and without foundations
Price only for material
Turn Key Price

Prices for **Wireframe and Roof and Wall(s)**

Solution which includes a structure prepared for coating the sheet metal of the roof cover and of one or more facades.

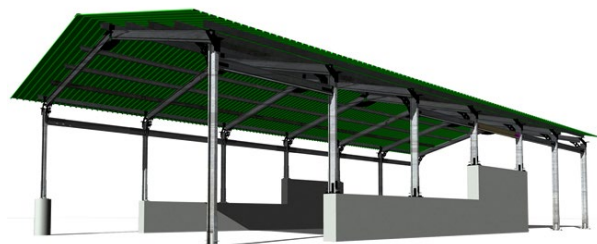
Price with and without foundations
Price only for material
Turn Key Price



Prices for **Wireframe and Roof**

Solution which includes a structure prepared for coating the sheet metal of the roof cover.

Price with and without foundations
Price only for material
Turn Key Price



Cold-formed Steel Pavilions

X6, X8, X10, X12, X16

Prices for Wireframe

Includes integral structure with connecting parts, purlins, connectors, screws, anchors and gutters. Includes all components for fixing to concrete decking slab.

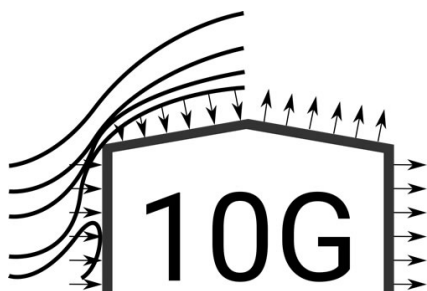
Price with and without foundations
Price only for material
Turn Key Price



6 different models, dozens of solutions

2 different systems, 10G and 14G,

on both the same quality in the structural material, the coating sheet, the fittings and the assembly.



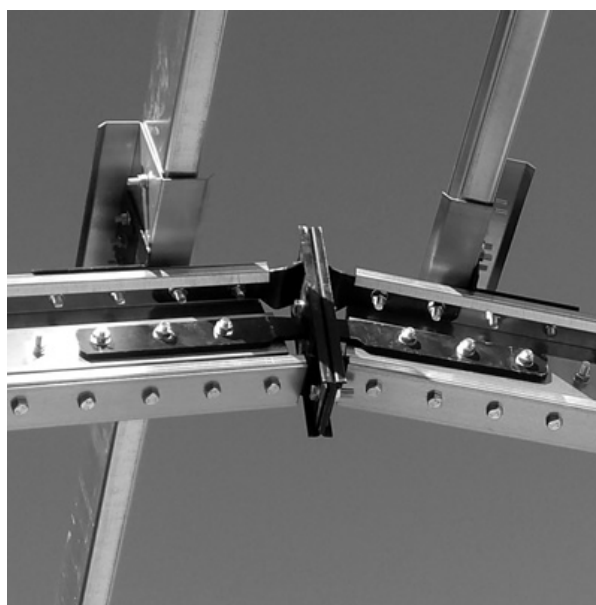
Restrictions

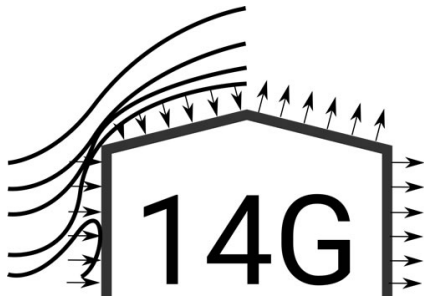
Altitude up to 800 m

Winds up to 120 km/h

Models X6 and X8

Conditions to check in choosing these models: altimetric quota below 800 m and exposure to winds with speeds below 120 km/h.





Restrictions

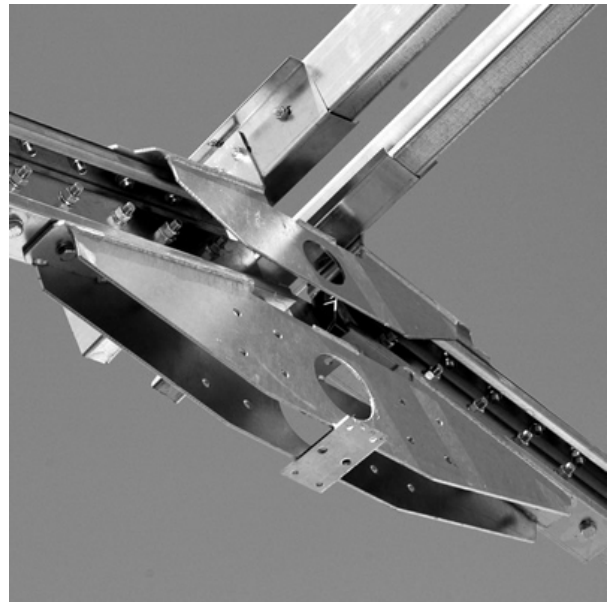
Altitude up to 800/1200 m
Winds up to 120 km/h

Models X10 and X12

Conditions to check in choosing these models: altimetric quota below 1200 m and exposure to winds with speeds below 120 km/h.

Models X16 and X16PLUS

Conditions to check in choosing these models: altimetric quota up to 800 m and exposure to winds with speeds below 120 km/h.



X6

Up to 123.9 m²



DESCRIPTION

Equipment consisting of Sigma 240 columns with 3.6 m in length, Sigma 240 beams with 3.6 m in length. Baseplate for connection between foundation and pillar. 10G connection elements.

Complete Structure (Wireframe)

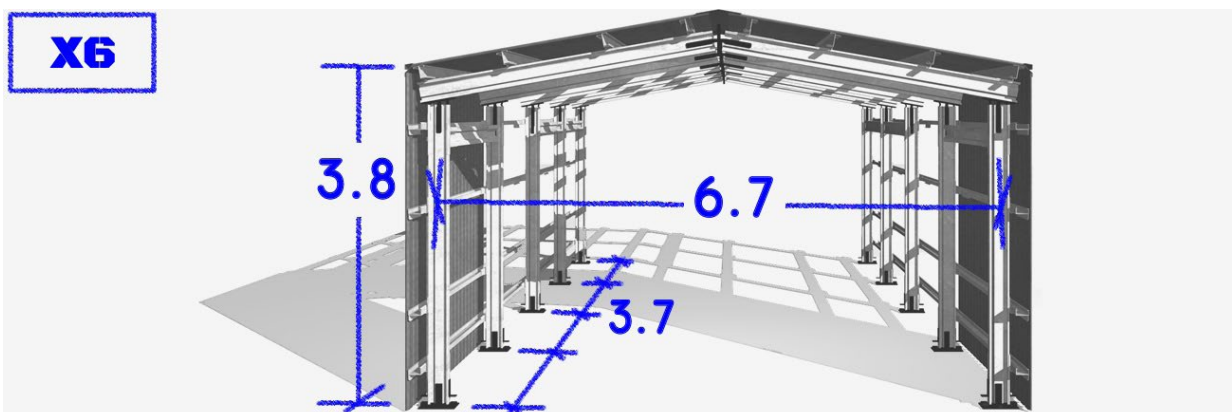
Includes integral structure with connecting parts, purlins, connectors, screws, anchors and gutters. It does not include lining plates, nor gates or service doors, nor assembly. It includes the provision of supports for gates and service doors. Includes all components for fixing to concrete decking slab.

Turnkey Solution with foundations at request.

It includes the supply and execution of foundations in concrete slabs in all the area of implantation on a base properly prepared by the client.

Constructed turnkey Solution at request

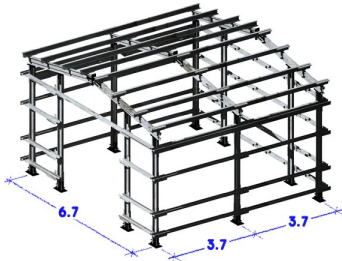
Structure in steel profiles of superior quality, properly assembled, with green, blue or white sheet metal coating, single sheet thickness 0.6 mm, coated on facades and tops. Resistant to corrosion and UV rays, galvanized and lacquered with HDX with fibers on both sides. It includes 3x3 m sliding gate and service door.



X6

Up to 123.9 m²

X6
3 pórticos



3 Portal Frames

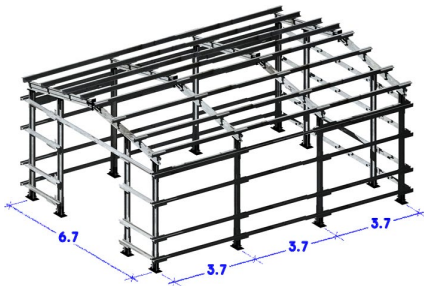
Length x Width (m): 7.4 x 6.7

Interior area (m²): 49.5

Minimum exterior area (m²): 58.4

(* Except Minimum exterior area measured by the external face of the Pillars, all other dimensions and areas are measured to the axis of Pillars.

X6
4 pórticos



4 Portal Frames

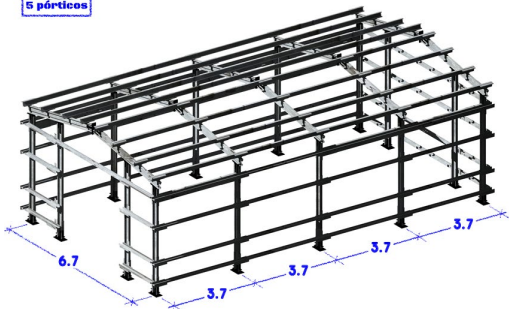
Length x Width (m): 11.1 x 6.7

Interior area (m²): 74.4

Minimum exterior area (m²): 85.0

(* Except Minimum exterior area measured by the external face of the Pillars, all other dimensions and areas are measured to the axis of Pillars.

X6
5 pórticos



5 Portal Frames

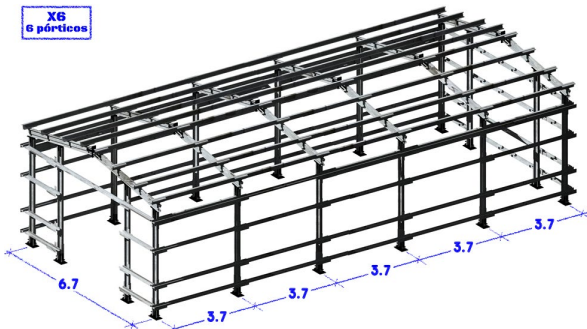
Length x Width (m): 14.8 x 6.7

Interior area (m²): 99.2

Minimum exterior area (m²): 110.0

(* Except Minimum exterior area measured by the external face of the Pillars, all other dimensions and areas are measured to the axis of Pillars.

X6
6 pórticos



6 Portal Frames

Length x Width (m): 18.5 x 6.7

Interior area (m²): 123.9

Minimum exterior area (m²): 139.4

(* Except Minimum exterior area measured by the external face of the Pillars, all other dimensions and areas are measured to the axis of Pillars.

X8

Up to 146.1 m²



DESCRIPTION

Equipment consisting of Sigma 240 columns with 3.6 m in length, Sigma 240 beams with 4.2 m in length. Baseplate for connection between foundation and pillar. 10G connection elements.

Complete Structure (Wireframe)

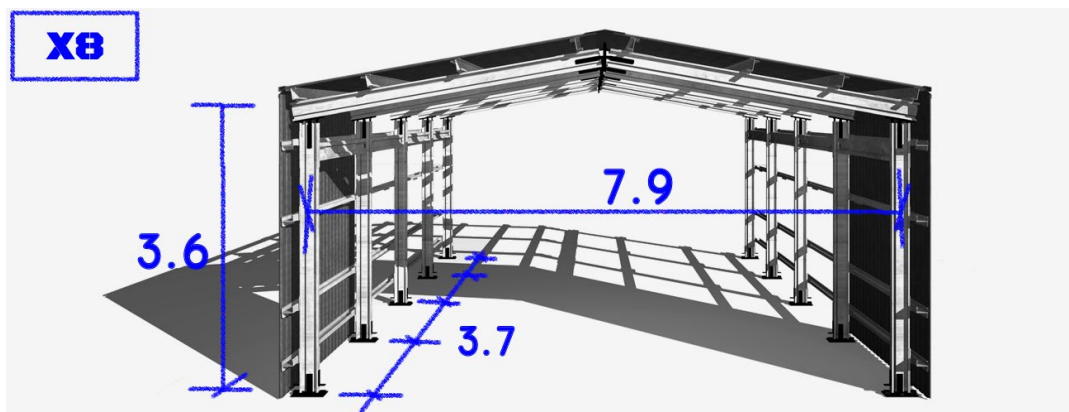
Includes integral structure with connecting parts, purlins, connectors, screws, anchors and gutters. It does not include lining plates, nor gates or service doors, nor assembly. It includes the provision of supports for gates and service doors. Includes all components for fixing to concrete decking slab.

Turnkey Solution with foundations at request.

It includes the supply and execution of foundations in concrete slabs in all the area of implantation on a base properly prepared by the client.

Constructed turnkey Solution at request

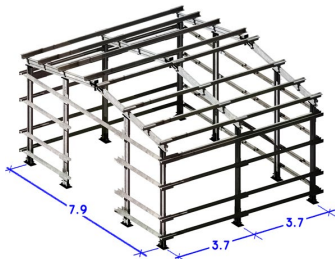
Structure in steel profiles of superior quality, properly assembled, with green, blue or white sheet metal coating, single sheet thickness 0.6 mm, coated on facades and tops. Resistant to corrosion and UV rays, galvanized and lacquered with HDX with fibers on both sides. It includes 3x3 m sliding gate and service door.



X8

Up to 146.1 m²

X8
3 pórticos



3 Portal Frames

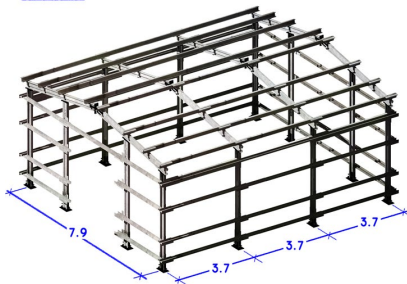
Length x Width (m): 7.4 x 7.9

Interior area (m²): 58.4

Minimum exterior area (m²): 68.0

(* Except Minimum exterior area measured by the external face of the Pilars, all other dimensions and areas are measured to the axis of Pilars.

X8
4 pórticos



4 Portal Frames

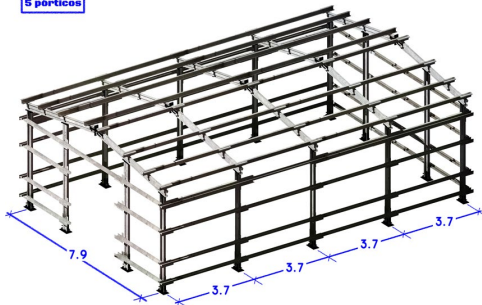
Length x Width (m): 11.1 x 7.9

Interior area (m²): 87.7

Minimum exterior area (m²): 97.4

(* Except Minimum exterior area measured by the external face of the Pilars, all other dimensions and areas are measured to the axis of Pilars.

X8
5 pórticos



5 Portal Frames

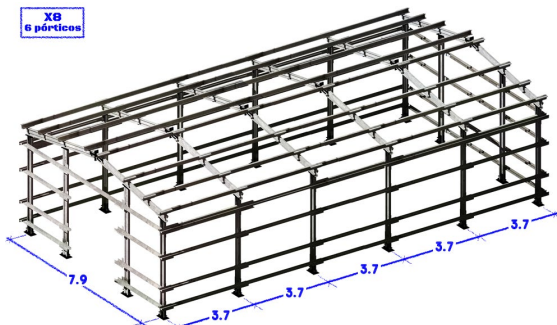
Length x Width (m): 14.8 x 7.9

Interior area (m²): 116.9

Minimum exterior area (m²): 128.5

(* Except Minimum exterior area measured by the external face of the Pilars, all other dimensions and areas are measured to the axis of Pilars.

X8
6 pórticos



6 Portal Frames

Length x Width (m): 18.5 x 7.9

Interior area (m²): 146.1

Minimum exterior area (m²): 162.3

(* Except Minimum exterior area measured by the external face of the Pilars, all other dimensions and areas are measured to the axis of Pilars.

X10

Up to 288.2 m²



DESCRIPTION

Equipment consisting of **Sigma 240** columns with 4200 mm in length, Sigma 240 beams with 4800 mm in length.

Baseplate for connection between foundation and pillars.

14G connection elements.

Complete Structure (Wireframe)

Includes integral structure with connecting parts, purlins, connectors, screws, anchors and gutters. It does not include lining plates, nor gates or service doors, nor assembly.

It includes the provision of supports for gates and service doors. Includes all components for fixing to concrete decking slab.

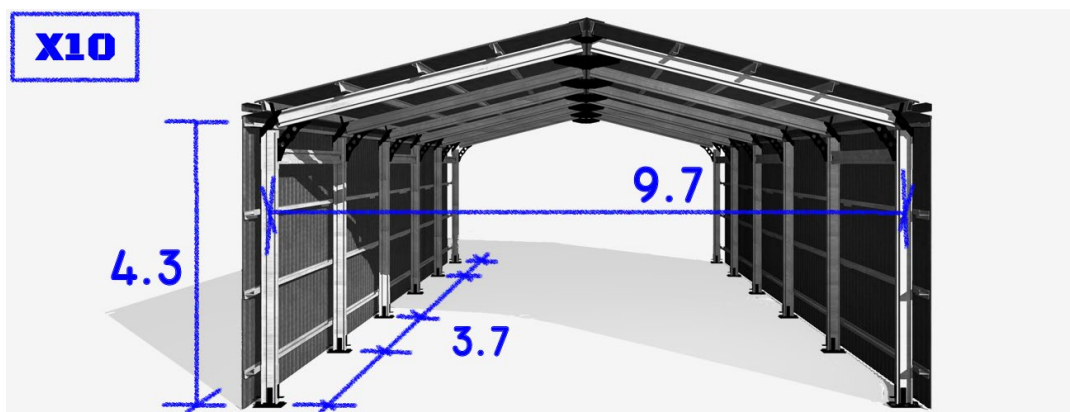
Turnkey Solution with foundations at request.

It includes the supply and execution of foundations in concrete slabs in all the area of implantation on a base properly prepared by the client.

Constructed turnkey Solution at request

Structure in steel profiles of superior quality, properly assembled, with green, blue or white sheet metal coating, single sheet thickness 0.6 mm, coated on facades and tops. Resistant to corrosion and UV rays, galvanized and lacquered with HDX with fibers on both sides.

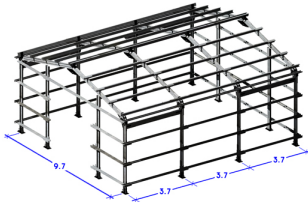
It includes 3x3 m sliding gate and service door.



X10

Up to 288.2 m²

X10
4 portales



4 Portal Frames

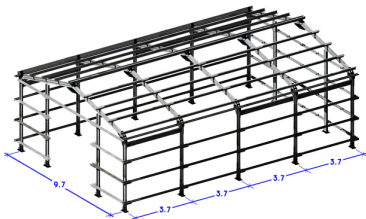
Length x Width (m): 11.1 x 9.7

Interior area (m²): 108.1

Minimum exterior area (m²): 110.7

(* Except Minimum exterior area measured by the external face of the Pilars, all other dimensions and areas are measured to the axis of Pilars.

X10
5 portales



5 Portal Frames

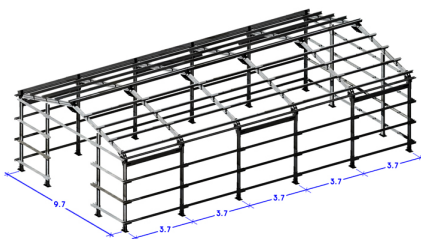
Length x Width (m): 14.8 x 9.7

Interior area (m²): 144

Minimum exterior area (m²): 147

(* Except Minimum exterior area measured by the external face of the Pilars, all other dimensions and areas are measured to the axis of Pilars.

X10
6 portales



6 Portal Frames

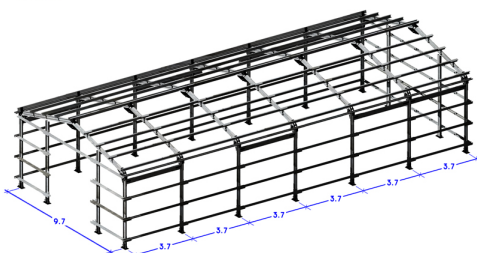
Length x Width (m): 18.5 x 9.7

Interior area (m²): 180

Minimum exterior area (m²): 184

(* Except Minimum exterior area measured by the external face of the Pilars, all other dimensions and areas are measured to the axis of Pilars.

X10
7 portales



7 Portal Frames

Length x Width (m): 22.2 x 9.7

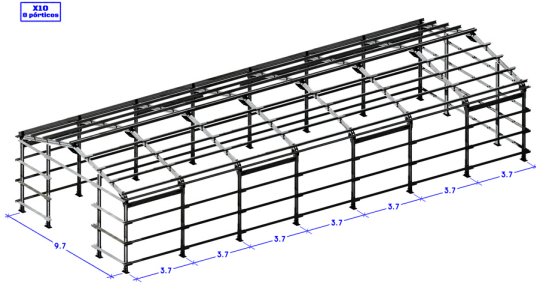
Interior area (m²): 216

Minimum exterior area (m²): 221

(* Except Minimum exterior area measured by the external face of the Pilars, all other dimensions and areas are measured to the axis of Pilars.

X10

Up to 288.2 m²



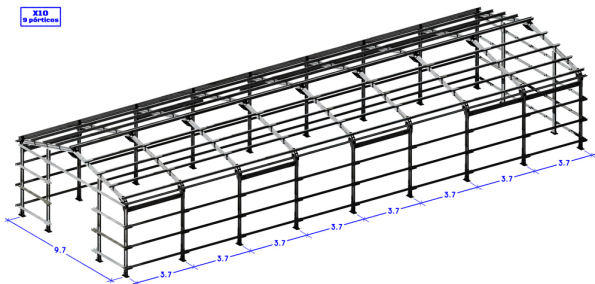
8 Portal Frames

Length x Width (m): 25.9 x 9.7

Interior area (m²): 251.3

Minimum exterior area (m²): 280

(*) Except Minimum exterior area measured by the external face of the Pillars, all other dimensions and areas are measured to the axis of Pillars.



9 Portal Frames

Length x Width (m): 29.6 x 9.7

Interior area (m²): 288.2

Minimum exterior area (m²): 340

(*) Except Minimum exterior area measured by the external face of the Pillars, all other dimensions and areas are measured to the axis of Pillars.

X12

Up to 355.2 m²



DESCRIPTION

Equipment consisting of Sigma 240 columns with 4200 mm in length, Sigma 240 beams with 6000 mm(X16) in length.

Baseplate for connection between foundation and pillars.
14G connection elements.

Complete Structure (Wireframe)

Includes integral structure with connecting parts, purlins, connectors, screws, anchors and gutters. It does not include lining plates, nor gates or service doors, nor assembly.

It includes the provision of supports for gates and service doors. Includes all components for fixing to concrete decking slab.

Turnkey Solution with foundations

 at request.

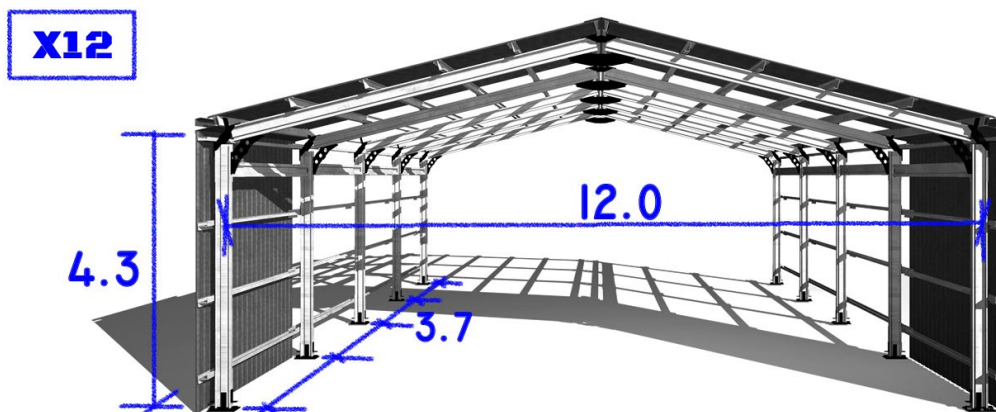
It includes the supply and execution of foundations in concrete slabs in all the area of implantation on a base properly prepared by the client.

Constructed turnkey Solution

 at request

Structure in steel profiles of superior quality, properly assembled, with green, blue or white sheet metal coating, single sheet thickness 0.6 mm, coated on facades and tops. Resistant to corrosion and UV rays, galvanized and lacquered with HDX with fibers on both sides.

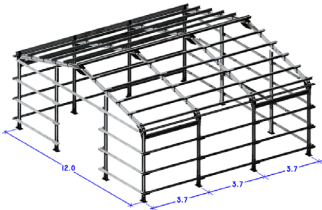
It includes 3x3 m sliding gate and service door.



X12

Up to 355.2 m²

X12
4 Portals



4 Portal Frames

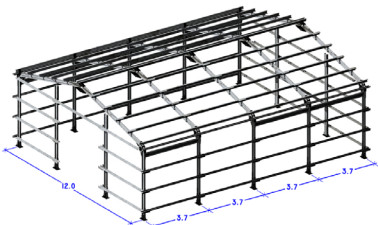
Length x Width (m): 11.1 x 12

Interior area (m²): 133.2

Minimum exterior area (m²): 153.1

(*) Except Minimum exterior area measured by the external face of the Pilars, all other dimensions and areas are measured to the axis of Pilars.

X12
5 Portals



5 Portal Frames

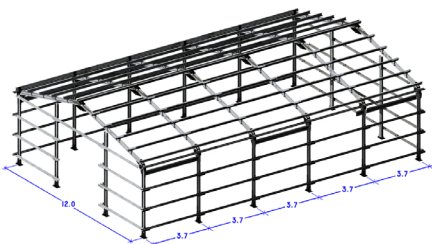
Length x Width (m): 14.8 x 12

Interior area (m²): 177.6

Minimum exterior area (m²): 198.2

(*) Except Minimum exterior area measured by the external face of the Pilars, all other dimensions and areas are measured to the axis of Pilars.

X12
6 Portals



6 Portal Frames

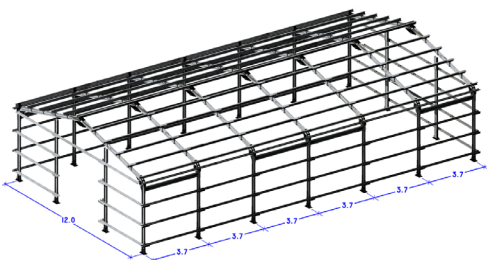
Length x Width (m): 18.5 x 12

Interior area (m²): 222

Minimum exterior area (m²): 240.1

(*) Except Minimum exterior area measured by the external face of the Pilars, all other dimensions and areas are measured to the axis of Pilars.

X12
7 Portals



7 Portal Frames

Length x Width (m): 22.2 x 12

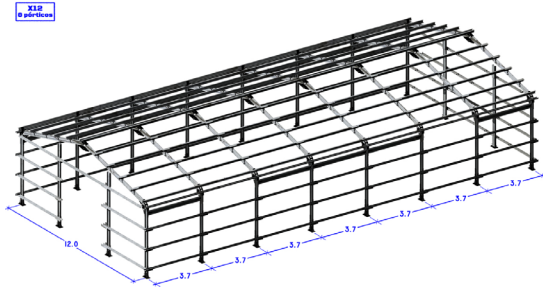
Interior area (m²): 266.4

Minimum exterior area (m²): 285.1

(*) Except Minimum exterior area measured by the external face of the Pilars, all other dimensions and areas are measured to the axis of Pilars.

X12

Up to 355.2 m²



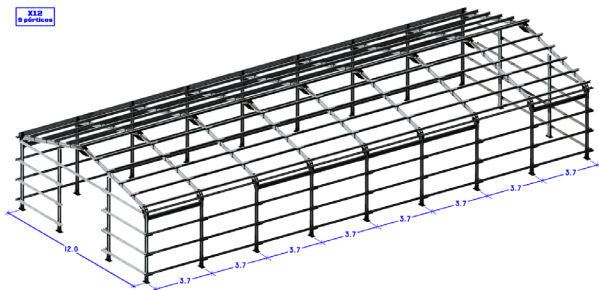
8 Portal Frames

Length x Width (m): 25.9 x 12

Interior area (m²): 310.8

Minimum exterior area (m²): 340.5

(* Except Minimum exterior area measured by the external face of the Pilars, all other dimensions and areas are measured to the axis of Pilars.



9 Portal Frames

Length x Width (m): 29.6 x 12

Interior area (m²): 355.2

Minimum exterior area (m²): 480.1

(* Except Minimum exterior area measured by the external face of the Pilars, all other dimensions and areas are measured to the axis of Pilars.

X16

Up to 406 m²



DESCRIPTION

Equipment consisting of Sigma 240 columns with 4820 mm in length, Sigma 240 beams with 7800 mm in length.

Baseplate for connection between foundation and pillars.
14G connection elements..

Complete Structure (Wireframe)

Includes integral structure with connecting parts, purlins, connectors, screws, anchors and gutters. It does not include lining plates, nor gates or service doors, nor assembly.

It includes the provision of supports for gates and service doors. Includes all components for fixing to concrete decking slab.

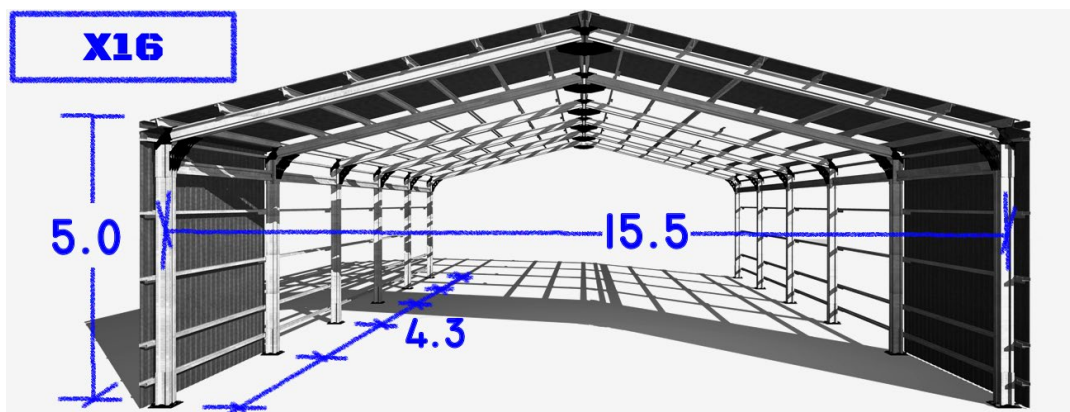
Turnkey Solution with foundations

at request.
It includes the supply and execution of foundations in concrete slabs in all the area of implantation on a base properly prepared by the client.

Constructed turnkey Solution

at request
Structure in steel profiles of superior quality, properly assembled, with green, blue or white sheet metal coating, single sheet thickness 0.6 mm, coated on facades and tops. Resistant to corrosion and UV rays, galvanized and lacquered with HDX with fibers on both sides.

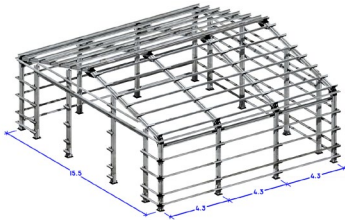
It includes 3 3x4 m sliding gate and service door.



X16

Up to 406 m²

X16
4 pilars



4 Portal Frames

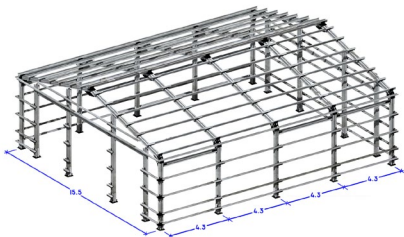
Length x Width (m): 13 x 15.5

Interior area (m²): 202

Minimum exterior area (m²): 232

(* Except Minimum exterior area measured by the external face of the Pilars, all other dimensions and areas are measured to the axis of Pilars.

X16
5 pilars



5 Portal Frames

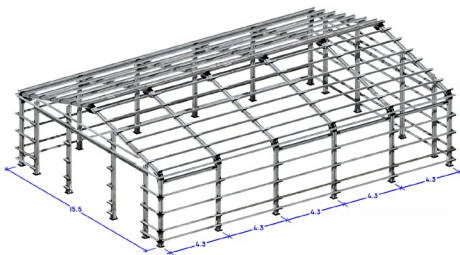
Length x Width (m): 17.4 x 15.5

Interior area (m²): 270

Minimum exterior area (m²): 298

(* Except Minimum exterior area measured by the external face of the Pilars, all other dimensions and areas are measured to the axis of Pilars.

X16
6 pilars



6 Portal Frames

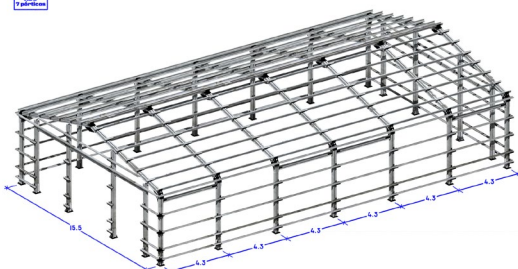
Length x Width (m): 21.8 x 15.5

Interior area (m²): 338

Minimum exterior area (m²): 356

(* Except Minimum exterior area measured by the external face of the Pilars, all other dimensions and areas are measured to the axis of Pilars.

X16
7 pilars



7 Portal Frames

Length x Width (m): 26.2 x 15.5

Interior area (m²): 406

Minimum exterior area (m²): 442

(* Except Minimum exterior area measured by the external face of the Pilars, all other dimensions and areas are measured to the axis of Pilars.

X16 PLUS

Up to 503 m²



DESCRIPTION

Equipment consisting of Sigma 240 columns with 4820 mm in length, Sigma 240 beams with 8400 mm in length.

Baseplate for connection between foundation and pillars.

14G connection elements..

Complete Structure (Wireframe)

Includes integral structure with connecting parts, purlins, connectors, screws, anchors and gutters. It does not include lining plates, nor gates or service doors, nor assembly.

It includes the provision of supports for gates and service doors. Includes all components for fixing to concrete decking slab.

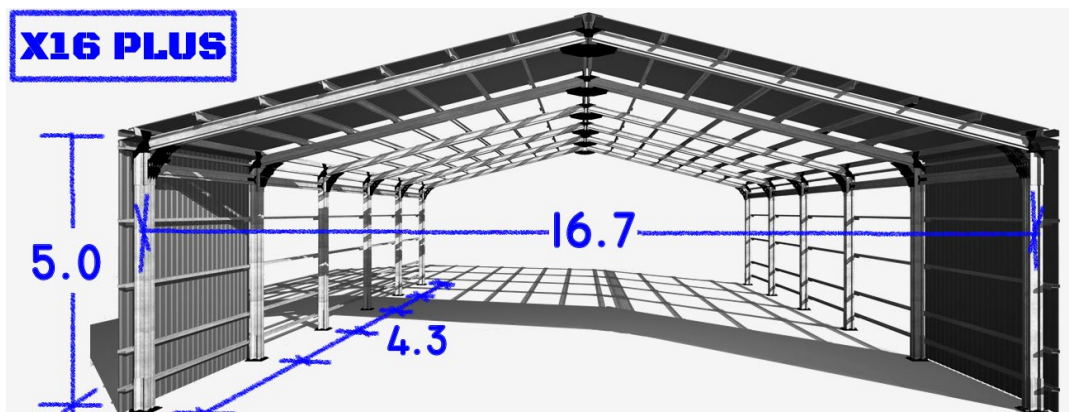
Turnkey Solution with foundations at request.

It includes the supply and execution of foundations in concrete slabs in all the area of implantation on a base properly prepared by the client.

Constructed turnkey Solution at request

Structure in steel profiles of superior quality, properly assembled, with green, blue or white sheet metal coating, single sheet thickness 0.6 mm, coated on facades and tops. Resistant to corrosion and UV rays, galvanized and lacquered with HDX with fibers on both sides.

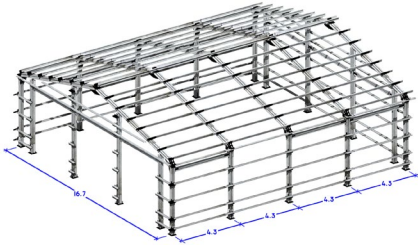
It includes 3 3x4 m sliding gate and service door.



X16 PLUS

Up to 503 m²

X16 PLUS
5 pilars



5 Portal Frames

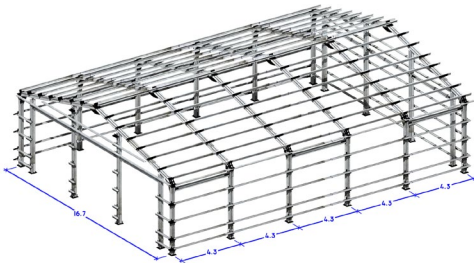
Length x Width (m): 17.4 x 16.7

Interior area (m²): 291

Minimum exterior area (m²): 316

(* Except Minimum exterior area measured by the external face of the Pilars, all other dimensions and areas are measured to the axis of Pilars.

X16 PLUS
6 pilars



6 Portal Frames

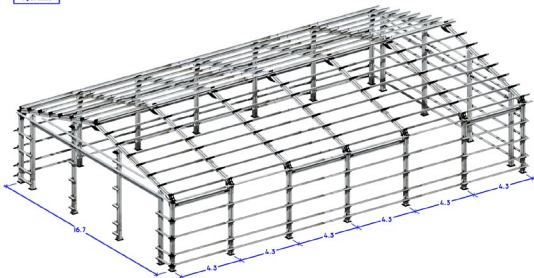
Length x Width (m): 21.8 x 16.7

Interior area (m²): 364

Minimum exterior area (m²): 389

(* Except Minimum exterior area measured by the external face of the Pilars, all other dimensions and areas are measured to the axis of Pilars.

X16 PLUS
7 pilars



7 Portal Frames

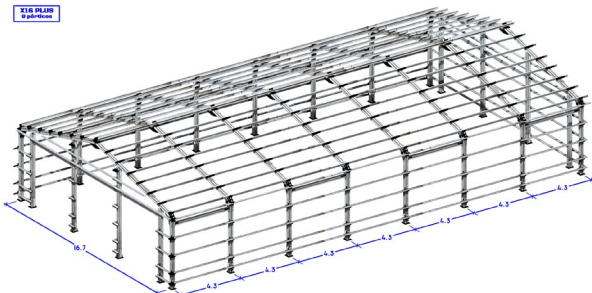
Length x Width (m): 26.2 x 16.7

Interior area (m²): 438

Minimum exterior area (m²): 488

(* Except Minimum exterior area measured by the external face of the Pilars, all other dimensions and areas are measured to the axis of Pilars.

X16 PLUS
8 pilars



8 Portal Frames

Length x Width (m): 30.1 x 16.7

Interior area (m²): 503

Minimum exterior area (m²): 542

(* Except Minimum exterior area measured by the external face of the Pilars, all other dimensions and areas are measured to the axis of Pilars.



ProcessoSigma



Processosigma, Unipessoal Lda

Tel Portugal: +351 933 749 707

Tel Poland: +48 667 087 039

Email: info@processosigma.com

www.processosigma.eu

WE HAVE SPECIFIC SOLUTIONS FOR YOUR APPLICATION